

Evaluation CAPN 2017

Each year the coordination of CAPN asks participants to review the archaeological field.

The evaluation by the participants is useful to guide future adjustments in the design and operation of the archaeological field camp.

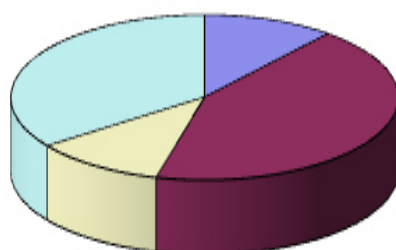
This review was based on the response, anonymously, to a questionnaire, located in an online platform (Alcaide). The participants had prior knowledge of the questionnaire content.

On CAPN 2017 28 answers were recorded from participants from 17 different countries (Canada, Czech Republic, Denmark, France, Germany, Iran, Italy, Mexico, Portugal, United States of America, United Kingdom, Russia, Serbia, Slovenia, Spain, Turkey, Ukraine). The director of the excavation, the sector coordinators and the remaining organization did not respond to the questionnaire.

The range of satisfying answers ranged from 1 (very dissatisfied) to 5 (extremely satisfied). Intermediate values were 2 (not very satisfied), 3 (satisfied) and 4 (quite satisfied).

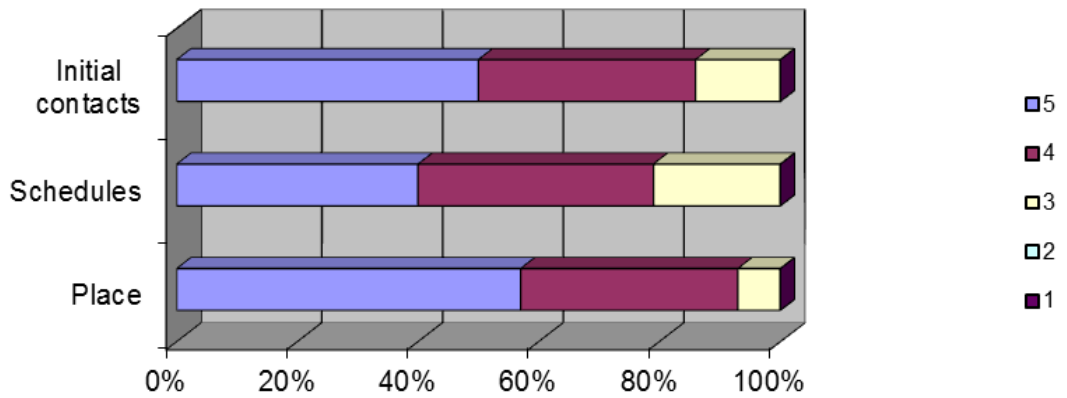
As global assessment responses manifest a high degree of satisfaction. The average reached **4,1** (from 1 to 5).

1 - How did you find out about the CAPN 2017?



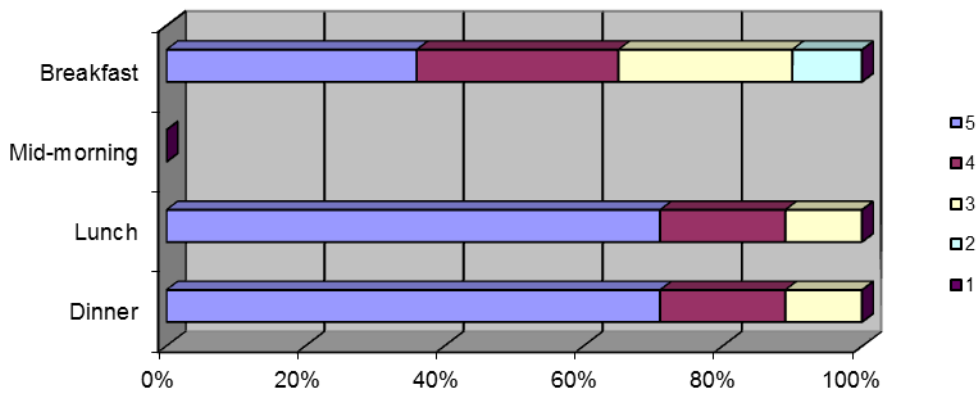
- Participated the previous year (11%)
- On the web (43%)
- Through school or university (11%)
- Through friends or other archaeologists (35%)

2 - Reception: location, schedules and initial contacts (averages: 4,4; 4,2; 4,5)



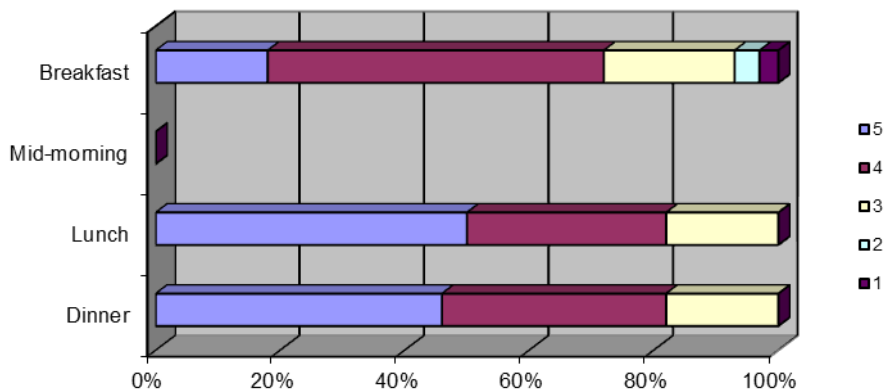
Extremely satisfied (5). Quite satisfied (4). Satisfied (3). Not very satisfied (2). Very dissatisfied (1).

3 - Amounts of food provided for breakfast, lunch and dinner (averages: 3,9; 4,6; 4,6)



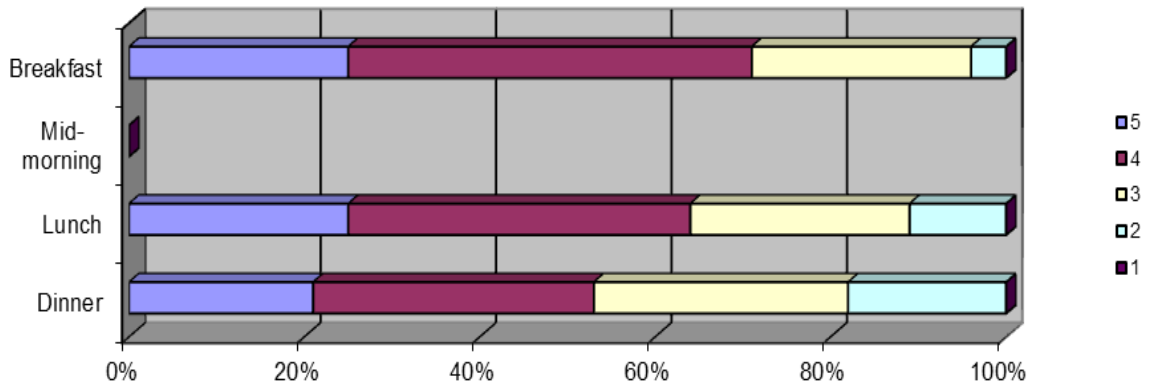
Extremely satisfied (5). Quite satisfied (4). Satisfied (3). Not very satisfied (2). Very dissatisfied (1).

4 - Quality of the food provided for breakfast, lunch and dinner (averages: 3,8; 4,3; 4,3)



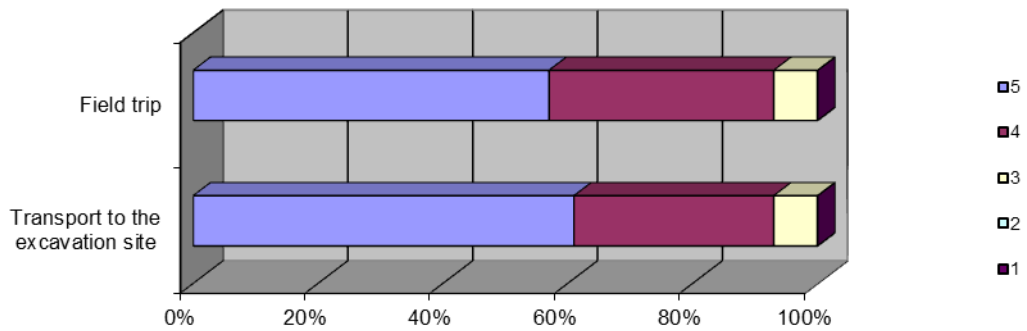
Extremely satisfied (5). Quite satisfied (4). Satisfied (3). Not very satisfied (2). Very dissatisfied (1).

5 – Meal hours (averages: 3,9; 3,8; 3,6)



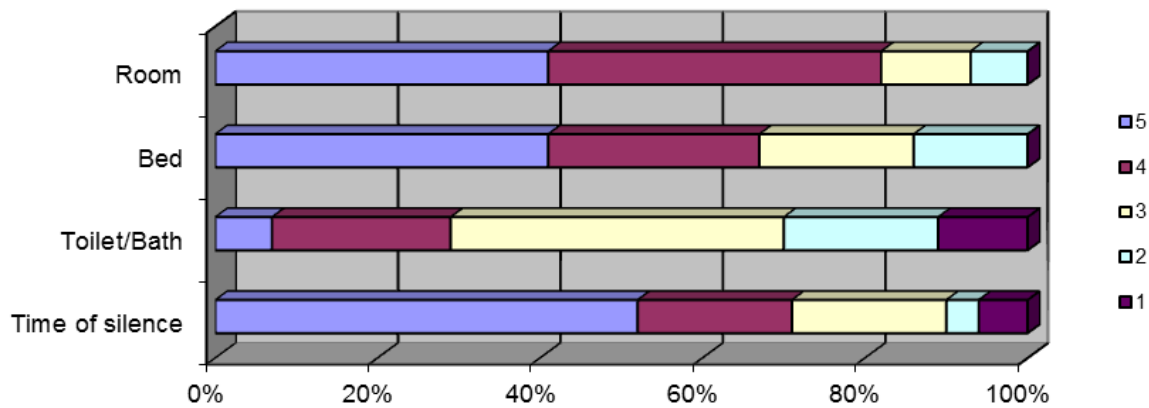
Extremely satisfied (5). Quite satisfied (4). Satisfied (3). Not very satisfied (2). Very dissatisfied (1).

6 - Transport to the excavation site and field trip (averages: 4,5; 4,5)



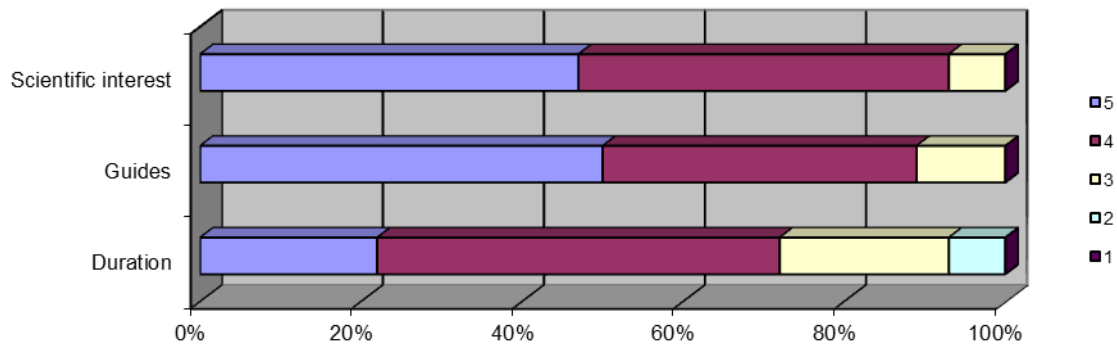
Extremely satisfied (5). Quite satisfied (4). Satisfied (3). Not very satisfied (2). Very dissatisfied (1).

7 - Accommodation: bedroom, bed, toilet / bath and time of silence (averages: 4,0; 3,8; 2,9; 3,9)



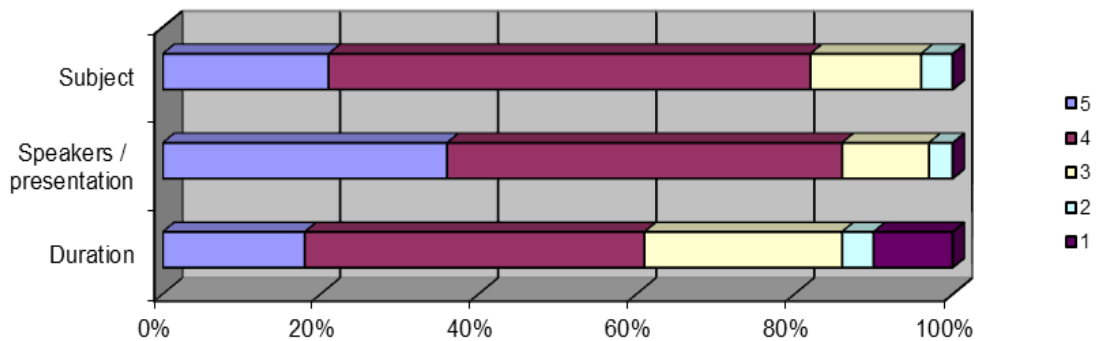
Extremely satisfied (5). Quite satisfied (4). Satisfied (3). Not very satisfied (2). Very dissatisfied (1).

8 – Field trips: scientific interest, guides and duration (averages: 4,4; 4,4; 3,9)



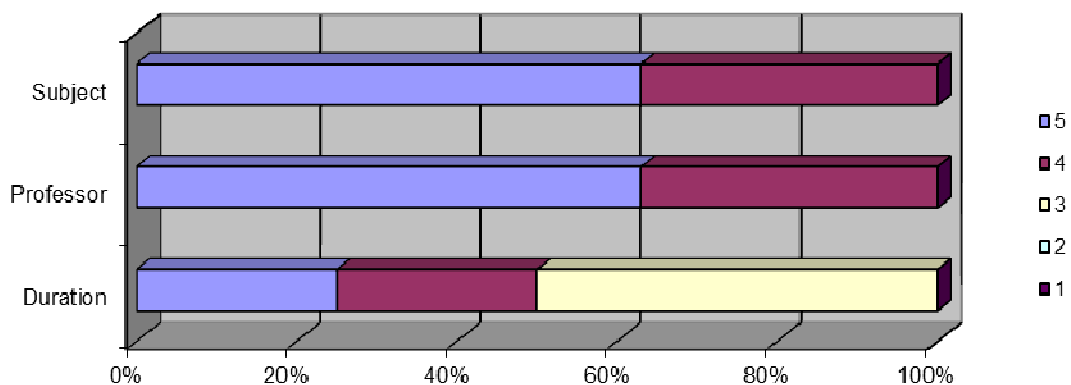
Extremely satisfied (5). Quite satisfied (4). Satisfied (3). Not very satisfied (2). Very dissatisfied (1).

9 - Lectures: subject, speakers / presentation and duration (averages: 4,0; 4,2; 3,5)



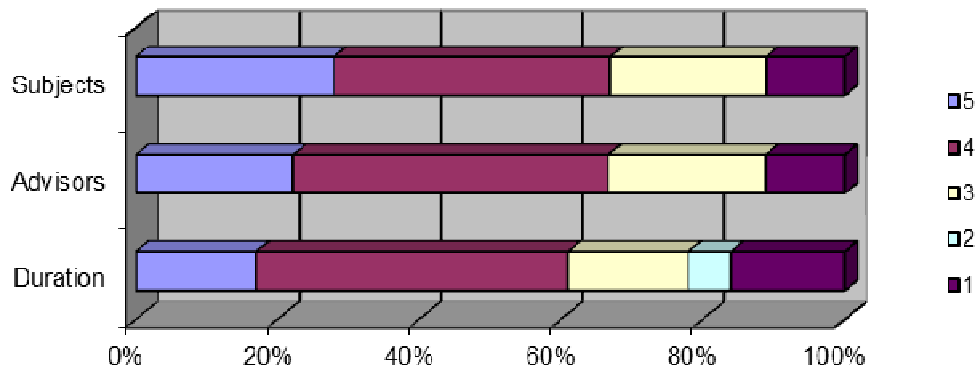
Extremely satisfied (5). Quite satisfied (4). Satisfied (3). Not very satisfied (2). Very dissatisfied (1).

10 – Workshop about prehistoric lithic industries (first period): subject, professor, duration (averages: 4,1; 4,1; 3,3)



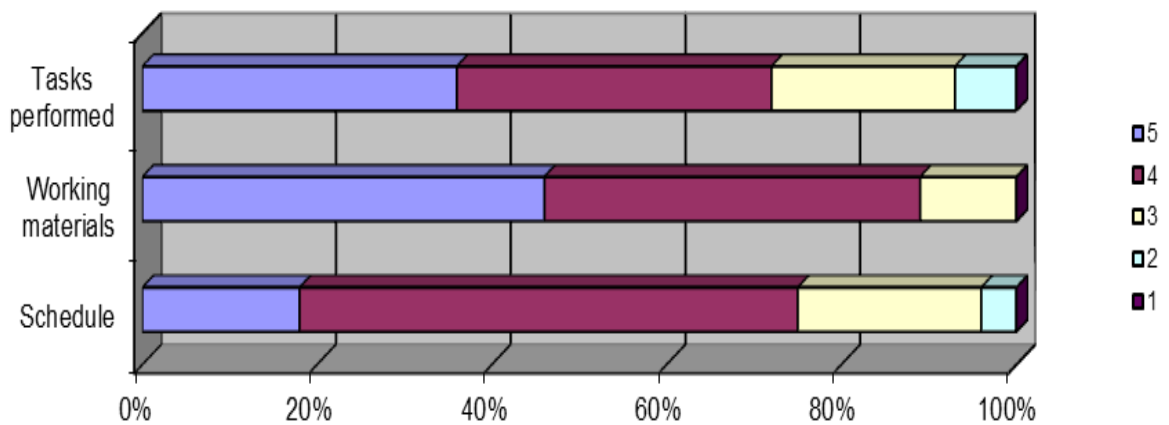
Extremely satisfied (5). Quite satisfied (4). Satisfied (3). Not very satisfied (2). Very dissatisfied (1).

11 – Others workshops (second period): subjects, advisors, duration (averages: 3,5; 3,5; 3,2)



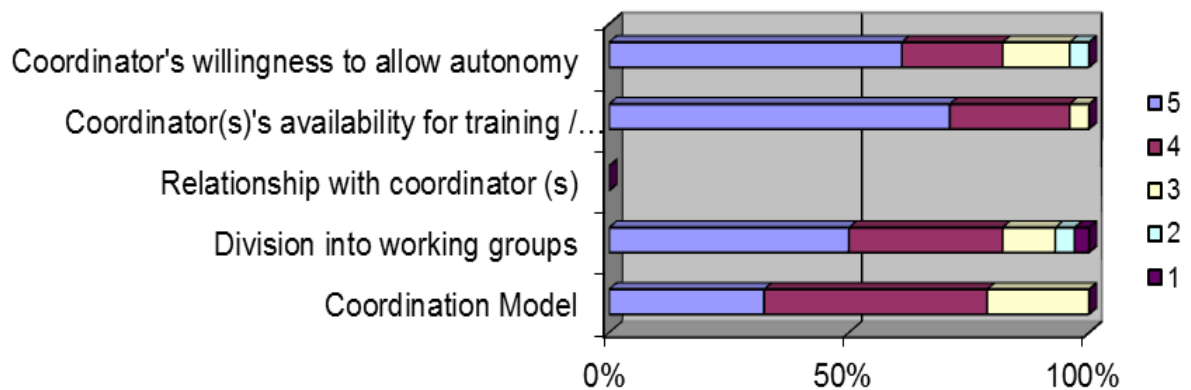
Extremely satisfied (5). Quite satisfied (4). Satisfied (3). Not very satisfied (2). Very dissatisfied (1).

12 - Field practices: schedule, working materials and tasks performed (averages: 4,0; 4,4; 3,9)



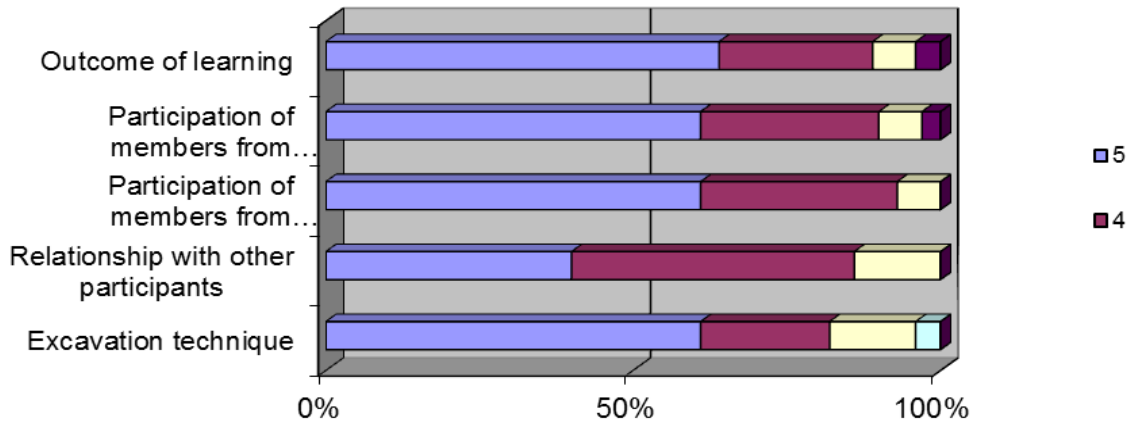
Extremely satisfied (5). Quite satisfied (4). Satisfied (3). Not very satisfied (2). Very dissatisfied (1).

13 - Field practices: other aspects (averages: 4,4; 4,7; 4,2; 4,1)



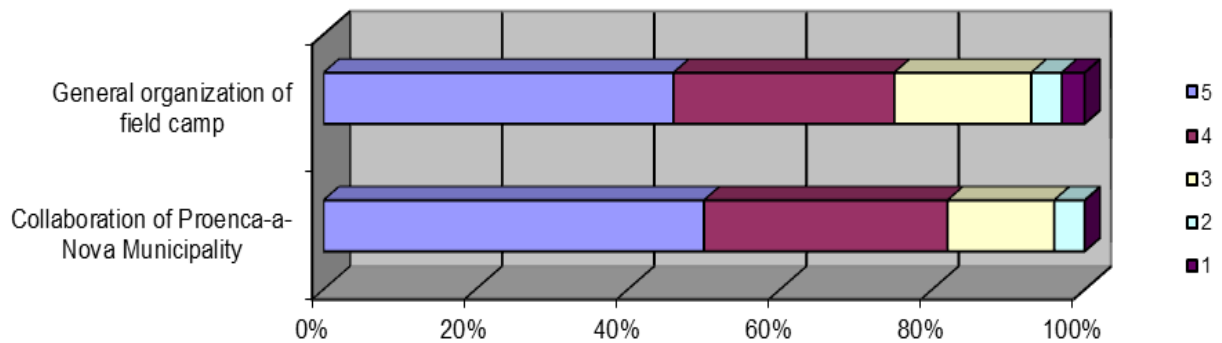
Extremely satisfied (5). Quite satisfied (4). Satisfied (3). Not very satisfied (2). Very dissatisfied (1).

14 - Field practices: outcome of learning, participation of members from different countries, participation of members from different educacional institutions, relationship with other participants and excavation technique (averages: 4,5; 4,4; 4,5; 4,3; 4,4)



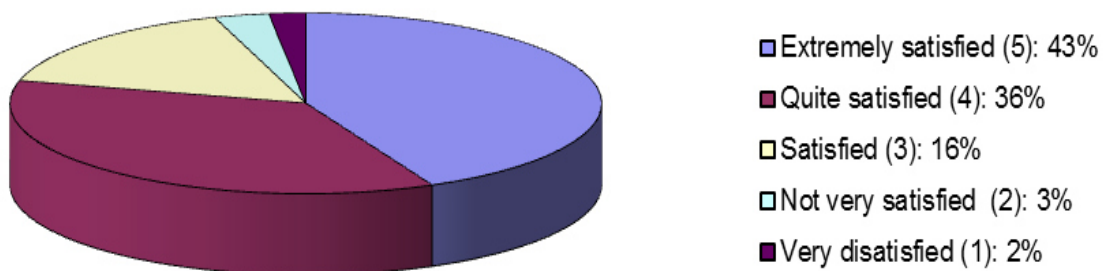
Extremely satisfied (5). Quite satisfied (4). Satisfied (3). Not very satisfied (2). Very dissatisfied (1).

15 - Field practices: general organization and collaboration of Proenca-a-Nova Municipality (averages: 4,1; 4,3)



Extremely satisfied (5). Quite satisfied (4). Satisfied (3). Not very satisfied (2). Very dissatisfied (1).

16 - Overall assessment of CAPN 2017



Extremely satisfied (5). Quite satisfied (4). Satisfied (3). Not very satisfied (2). Very dissatisfied (1).

17 – The comments of the participants

1. I absolutely enjoyed my stay in Portugal for this field school. The lectures given by the professionals were very interesting and the supervisors were all extremely welcoming and helpful. For future field schools I would suggest that perhaps the last meal of the day could be lighter than the lunch meal. With the way our schedule was arranged, I do not find that we work up enough of an appetite between lunch and dinner to be able to eat another large meal.
2. One of the greatest experiences of my life. The relationships I made with other participants and coordinators I will remember for a lifetime. I felt like I found a family in Proenca-a-Nova and will try my best to return next year.
3. Great workcamp, my personal suggestion for next year: more hours of sleep (6 hours is not enough) and free time with no activities and more rotation of our work in everyday work not always the same people in the chamber for example, one opportunity to every participant.
4. There could be rotation of participants between sectors and between activities/tasks during the field so that the learning included everything that can be done during the excavation campaign.
5. The learning experience and the commitment of participants would be much more effective if there were rotation of tasks and sectors. Keeping participants for two consecutive weeks always doing the same task in the same sector increases monotony and at the same time decreases commitment and consequently productivity.
6. Coordinators are really caring and always supportive and in case of emergencies provide everything needed.
7. I think dinner should be served earlier due to having to be up early in the morning, we were not able to get enough sleep. The mattress was very hard and the noise level was not good. But everything else was amazing and I will be returning next year!
8. There were some problems with the food. Without counting the food poisoning, there was way too much meat. It would be good for next time to prepare more vegetables, we are not used to such a heavy alimentation.
9. More food variety and less field work because at dinner time we're all sleepy.
10. Give a prize for the best bosses to Gonzalo, Pedro and Fernando.
11. The best organized workcamp, I've been to!